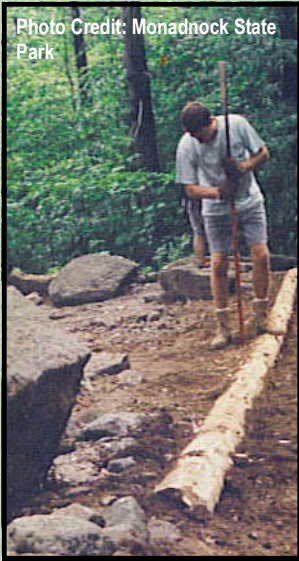


Photo Credit: Monadnock State Park



Donations to the Monadnock Mountain Fund help to purchase: trail maintenance equipment, construction materials and search & rescue equipment such as rescue litters, two-way radios and medical supplies.

HOW YOU CAN HELP:

The Monadnock Advisory Commission greatly depends on generous donations from Monadnock supporters like you. All donations go directly to the *Monadnock Mountain Fund*.

For more information contact us at:

Monadnock@dred.state.nh.us
603.532.8862

Yes, I would like to donate \$_____. I prefer my donation to help with (circle one):

- Trail Maintenance Research/Education
- Search & Rescue No Preference

Name: _____

Address: _____

City: _____ State: _____

Zip: _____

Email: _____

PLEASE SEND DONATIONS TO:

Monadnock Mountain Fund
c/o Monadnock State Park
P.O. Box 181, Jaffrey, N.H. 03452

(Make checks payable to: The Mountain Fund)

c/o Monadnock State Park
P.O. Box 181
Jaffrey, N.H. 03452

Monadnock Advisory Commission



**Help Preserve
Our Natural
Landmark...**

**SUPPORT THE
MONADNOCK
ADVISORY COMMISSION**

Monadnock Advisory Commission

Did you know that the majority of Monadnock State Park is comprised of land which is not owned by the State of NH? Although the largest landowner is the Society for the Protection of NH Forests, the land is managed by Monadnock State Park under the supervision of a legislatively mandated advisory commission.

Established in 1976 the Monadnock Advisory Commission (MAC) was the first attempt to view Mt Monadnock on a regional scale. Its main purpose is to oversee management and recommend policies for Mount Monadnock, Gap and Little Monadnock Mountains.

The Monadnock Mountain Fund

The NH Division of Parks & Recreation is the nation's only user-funded park system. The only funds available to run this system are those collected through park fees, not taxes. Park funding is often limited and the Monadnock Mountain Fund often serves to close that gap.

All donations to the Mountain Fund go directly to support the lands managed as Monadnock State Park.

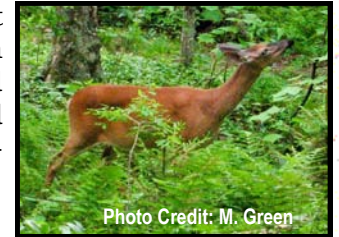


THE MISSION

The Monadnock Advisory Commission was created to ensure that the growing popularity of Mt. Monadnock not be allowed to compromise the integrity of this Natural Landmark and its visitors experiences; to ensure the perpetual availability of recreational and educational benefits of Mt. Monadnock, Little Monadnock and Gap Mountain and to ensure consistent management over these lands and their connecting corridors.

Monadnock's Future

NH is the fastest growing state in New England with a rapid rate of land development.



As human encroachment increases, more human induced effects can be seen on the mountain.

The future of Monadnock depends on continued funding through the Monadnock Mountain Fund, current research, education and outreach.

MERE Project

The Monadnock Ecological Research and Education (MERE) Project directed by faculty at Antioch University New England will link graduate and high school students within the region in a scientific and educational initiative. The goal of the project is to study the mountain's ecology and share what is learned with community members and mountain visitors alike.

