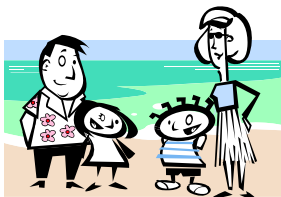


Please Don't Feed Wild Animals

- When wildlife receive extra food from humans it allows them to produce and raise more young each year.
- When populations of animals become superabundant, diseases like distemper, rabies, and parasites spread more rapidly killing more animals than they would in less dense populations.
- When wild animals are fed by people, they lose their natural fear of people. Once this happens, they are more likely to cause problems for people.
- Always dispose of trash and compost in secure bins that do not feed crows, gulls, skunks, raccoons, fox, coyotes, rats or other generalist species.
- Feed your pets inside.



We're going to clean-up our act and do our part to keep wildlife wild!

COASTAL SKUNK ECOLOGY RESEARCH PROJECT

Limiting Skunk Problems & Reducing Their Impacts on Beach-Nesting Birds



COASTAL SKUNK ECOLOGY RESEARCH PROJECT

Luanne Johnson
Doctoral Candidate
Antioch University New England

E-mail: Luanne_Johnson@antiochne.edu
The CSERP is a cooperative project between Antioch University,
USGS Massachusetts Cooperative Fish & Wildlife Research Unit
& Massachusetts Division of Fisheries & Wildlife

Project support provided by:

The Edey Foundation

Dr. William and Nan Harris Family Foundation

**ARE YOU HAVING
PROBLEMS WITH
SKUNKS?**

**DID YOU KNOW YOU
MAY BE PART OF
THE PROBLEM?**

Skunks are a natural part of many Atlantic Coast beaches, but too many skunks can cause problems for other coastal residents.

A superabundant skunk population can impact beach-nesting birds (Piping Plovers, Least Terns, and American Oystercatchers) by eating their eggs or chicks. Skunks can also impact people when they spray pets or inhabit the foundations of homes.

Why are skunks so abundant? Skunks are generalist species, along with raccoons, crows, fox, coyotes, and others. These species are “urban adapters” that can readily switch their diet to a wide variety of foods, tolerate close proximity to humans, and produce a large number of young when provided with reliable food and shelter.

Generalist species thrive when human activities provide supplemental food and shelter on and away from the beach. These animals are not controlled by predators. Their populations are primarily limited by resources (food and shelter) and diseases (distemper, rabies, and parasites).

Please do your part to reduce their populations. Read on to learn about what you can do at home and at the beach to help.

At the Beach....



Picnics are for People.
Don't leave food scraps behind.
Carry in-Carry out.

Keep your food secure in a cooler or zippered bag while you swim & play so that gulls & crows can't get to it.

Please don't leave cleaned fish carcasses on the beach or throw them into the surf. If you catch a fish— clean it at home.

If the trash can at the beach is full— notify the beach manager, or take your trash home with you.

When you store boats and kayaks, put them up on blocks so that skunks and raccoons can't use them for dens.

Remove buckets and fish tubs that wash up on beaches and into backdune areas. They provide easy dens or retreats for skunks near the beach.

Around your home...

(even if you live 2 miles from the beach)

Please do not leave pet food outside.

Use a seed catcher under your bird feeder and place a wire fence around the base— at a distance of 3 feet .

Keep your bird seed stored in secure bins to discourage rodents.

If you have a rodent problem (mice or rats) at your home – call the county rodent officer for help.

Use a secure composting bin that lets air in but keeps wildlife out.

Raise your woodpile at least 10 inches off of the ground and rake under it periodically.

Remove junk and brush piles from your yard.

Remove debris under your deck or beach house that can provide hiding places for skunks, rats, and raccoons.

Store boats up at least 1 ft. above the ground.

Dens under homes and garages provide optimal wintering sites that reduce winter mortality for skunks and raccoons. Use fencing to block access to areas under foundations, decks, garages & porches. Be certain you aren't blocking an animal in when you install the fencing.

Keep your garbage cans tightly covered or in a secure wooden bin with a lid.



This trash can is feeding predators.
Secure the lid and put trash out for pick-up in the morning.

If you are building a new home, consider native plants and grasses instead of a lawn. Skunks, raccoons, and crows thrive on the grubs and insects lawns provide.